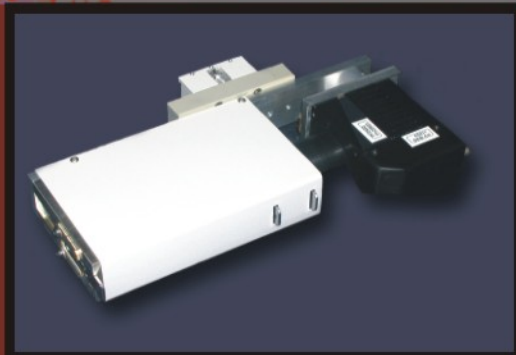


## New Capabilities for Multi-Materials Analyser!



### Model No.: MMA SSD-1000 Solid-State Detector

- improves count rates by up to 4 times compared to standard monochromator.
- count linearity to 50,000 cps.
- energy dispersive separation of  $K\alpha$  and  $K\beta$  and fluorescence/scatter background.

### Model No.: MMA PXWR-1000 Planar X-Ray Waveguide Resonator

- large d-spacing work up to  $175\text{\AA}$ .
- very narrow parallel beam.
- high efficiency diffraction for less ordered materials.



### Model No.: MMA LDR-1010 Auto Sample Loader

- random access to all 10 samples.
- spinning in the analysis position.
- non-intrusive.

Interchangeable parallel beam, low angle and focussing geometry with variable radius.

Interchangeable stages:  
powder, texture, high temperature, low temperature auto loader, spinner.

Interchangeable detectors:  
Graphite monochromator, thin film and solid state.

Revolutionary harmonic goniometer  
with zero backlash.

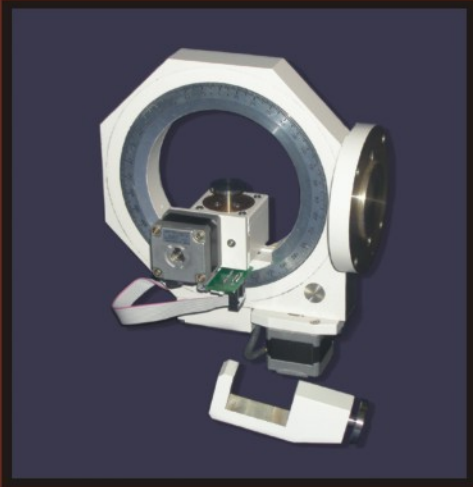
Lightweight and transportable.



XRD



**MMA Compact  
X-Ray Diffractometer**



**Model No.: MMA EC-1000  
Eulerian Cradle**

- slimline design co-ordinates with the MMA.
- allows access to extreme back reflection angles for Chi-offset residual stress.
- ideal for parallel beam texture work.

**Model No.: MMA LT-1000  
The Peltier Stage**

- extremely accurate temperature control in the range 0°C to 90°C with a temperature setting accuracy of 0.1°C.
- shown here in a parallel beam system so stage stays horizontal for melting point determination.



**Model No.: MMA SSS-1000  
Sample Spinner**

- aid to improving crystallite statistics.
- stepping motor driven.
- spins with a constant speed of 1 revolution per second.
- precise sample height is ensured by a system of reference rollers.

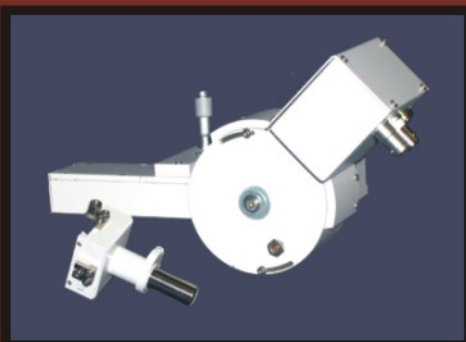
**Model No.: MMA PGH-1000  
Ni/C Parabolic Graded d-Spacing Mirror**

- parallel beam 0.6 mm high includes a Soller in the other direction.
- The Ni absorbs the  $\text{CuK}\beta$  so the mirror transmits only  $\text{CuK}\alpha$
- tube-shield mount allows angular adjustment around the surface of the mirror, so adjustment of beam to goniometer axis is simplified.



**Model No.: MMA GIA-1000  
The Glancing Incidence or  
Parallel Beam Detector**

- (for use with the PGH 1000 NiC Mirror and PXWR 1000)
- includes a 0.4° Soller collimator and LiF analyser crystal.



**Model No.: MMA PCO-1000  
A New-Generation Monolithic Polycapillary  
Optic**

- available in 6 mm or 13 mm diameter.

