

Determination of Morphine Using Glassy Carbon Electrode (3 mm) with ppb Sensitivity

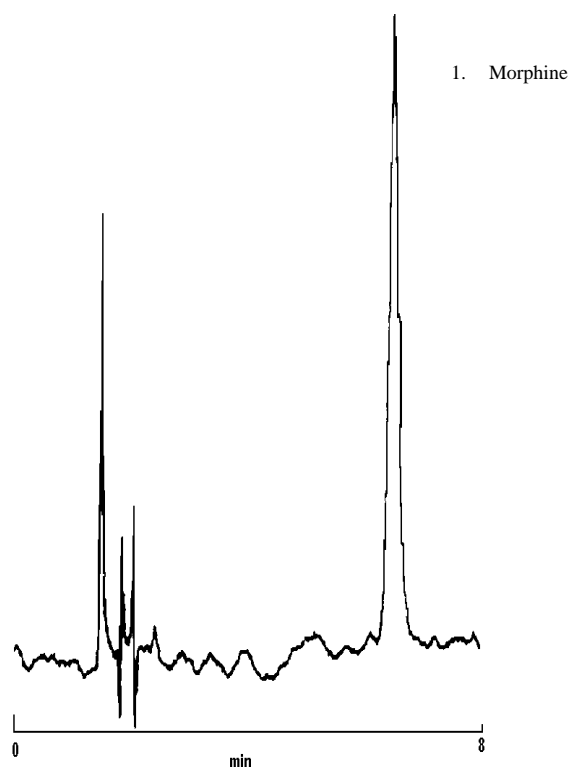


Figure 1 Standard (Overspike) Analysis (40 ppb)

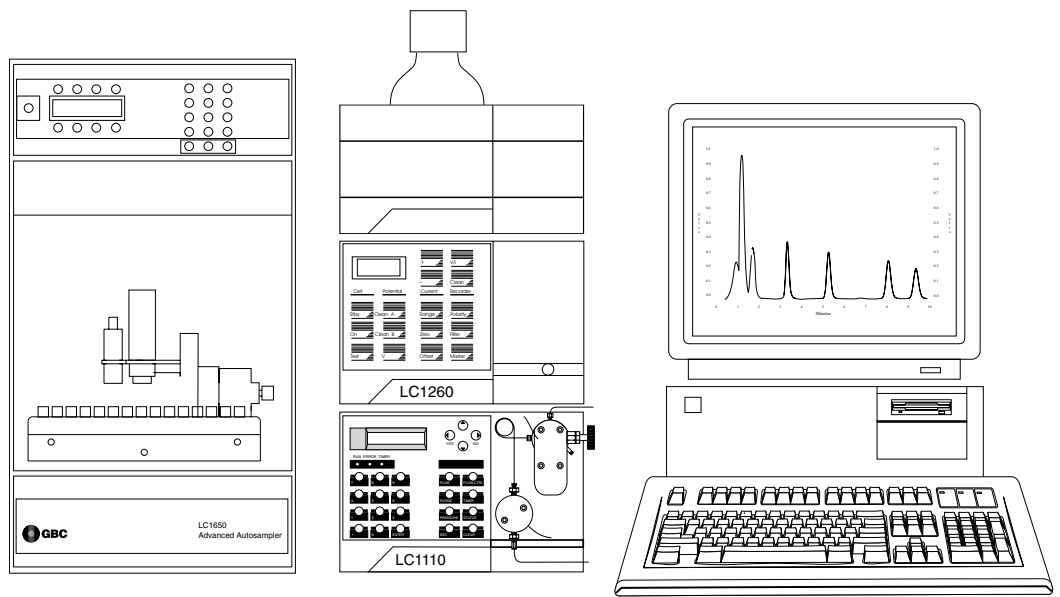
Conditions

Column: Spherisorb OD S2 (C18),
5 μ M Column (250 x 4.6 mm
ID)
Mobile Phase: 0.2 M Sodium Perchlorate,
5 mM Sodium Citrate,
3 mM Triethylamine, (pH 4.9)
(90%) and Acetonitrile (10%)
Flow Rate : 1.5 ml/min
Injection Vol.: 20 μ l
Temperature: 30°C
Electrode: 3 mm Glassy Carbon
Potential: 700 mV (Ag/AgCl)

GBC HPLC Instrumentation

LC1110 Dual Piston HPLC Pump
LC1260 Electrochemical Detector
GBC Column Heater
LC1650 Advanced Autosampler
WinChrom Chromatography Data
Management System
LC1445 System Organiser





P11
01-0382-00

GBC Scientific Equipment Pty Ltd
A.C.N. 005 472 686
12 Monterey Road, Dandenong, Victoria, 3175, Australia
Phone: (03) 9213 3666 Fax: (03) 9213 3677

All rights reserved
GBC publication number 01-0382-00
September, 1995