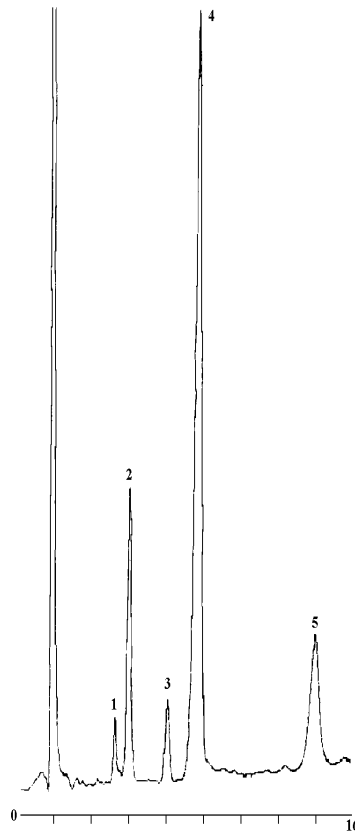


Analysis of Sugars (Saccharides) in Brewery Malt Extract

1. Fructose (1.02 ppm)
2. Glucose (6.09 ppm)
3. Sucrose (1.66 ppm)
4. Maltose (30.6 ppm)
5. Maltotriose (7.47 ppm)



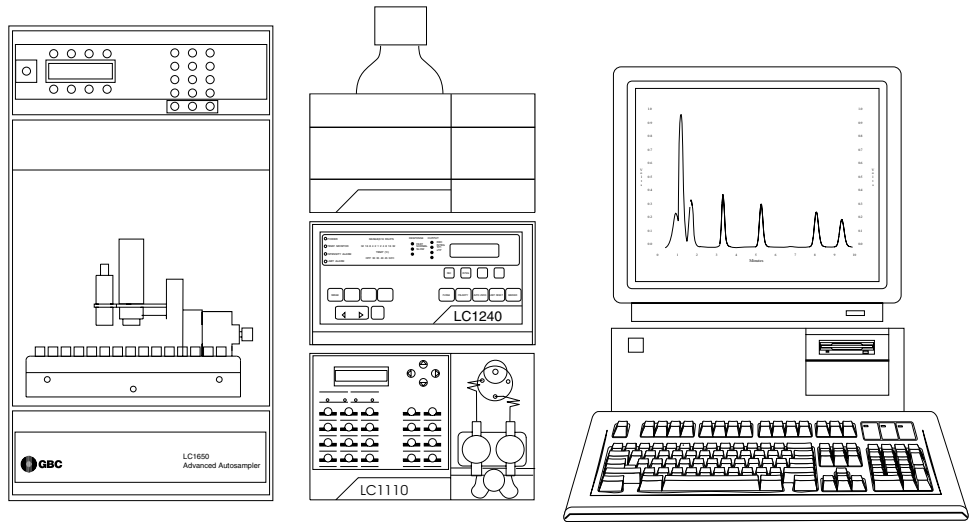
Conditions

Column: Spherisorb 5 μ M Amino Column (250 x 4.6 mm ID)
Mobile Phase: Acetonitrile (75%) and Water (25%)
Flow Rate: 1.5 ml/min
Injection Vol: 20 μ l
Column Temp.: 32°C
RI Temp.: 50°C

GBC HPLC Instrumentation

LC1110 Dual Piston HPLC Pump
LC1240 Refractive Index Detector
GBC Column Heater
LC1650 Advanced Autosampler
WinChrom Chromatography Data Management System





F3
01-0360-00

GBC Scientific Equipment Pty Ltd
A.C.N. 005 472 686
12 Monterey Road, Dandenong, Victoria, 3175, Australia
Phone: (03) 9213 3666 Fax: (03) 9213 3677

All rights reserved
GBC publication number 01-0360-00
September, 1995