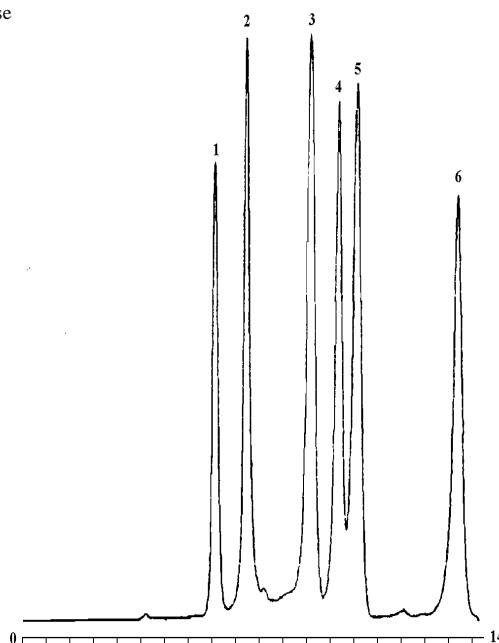


### Analysis of Sugars (Saccharides) and Sugar Alcohols by Ligand Exchange Chromatography and RI Detection

*'...sugars and  
sugar alcohols  
in fermentation  
liquor...'*

- |              |              |
|--------------|--------------|
| 1. Raffinose | 2. Sucrose   |
| 3. Glucose   | 4. Galactose |
| 5. Fructose  | 6. Sorbitol  |



*Figure 1 Standard (Overspike) Analysis (7 ppm)*

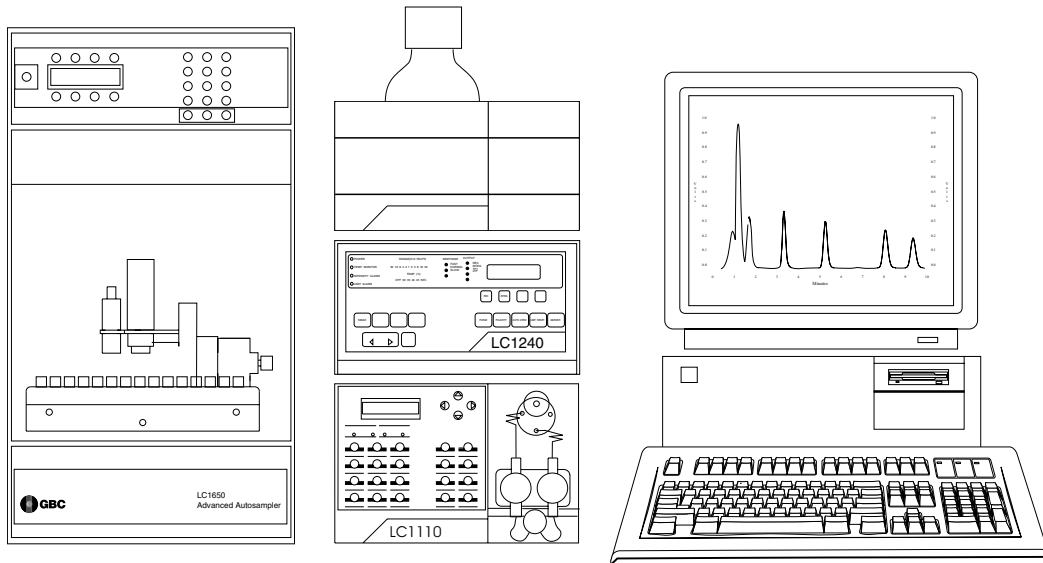
#### GBC HPLC Instrumentation

LC1110 Dual Piston HPLC Pump  
LC1240 Refractive Index Detector  
Timberline Column Heater  
LC1650 Advanced Autosampler  
WinChrom Chromatography Data  
Management System

#### Conditions

Column: Interaction CHO-620  
Carbohydrate Column  
Mobile Phase: Water  
Flow Rate: 0.5 ml/min  
Injection Vol: 20  $\mu$ l  
Column Temp.: 90°C  
RI Temp.: 50°C





F2  
01-0359-00

**GBC Scientific Equipment Pty Ltd**  
A.C.N. 005 472 686  
12 Monterey Road, Dandenong, Victoria, 3175, Australia  
Phone: (03) 9213 3666 Fax: (03) 9213 3677

All rights reserved  
GBC publication number 01-0359-00  
September, 1995