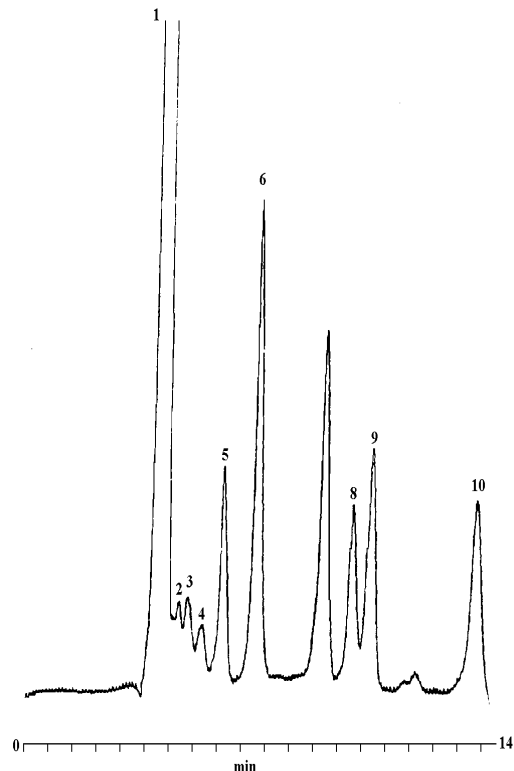


Analysis of Sugars (Saccharides) and Sugar Alcohols in Fermentation Liquor

*'...sugars and
sugar alcohols
in fermentation
liquor...'*

1. Oligosaccharides (DP6)
2. DP6
3. DP
4. DP4
5. Raffinose (DP3)
6. Sucrose
7. Glucose
8. Galacose
9. Fructose
10. Sorbitol/Ethanol



GBC HPLC Instrumentation

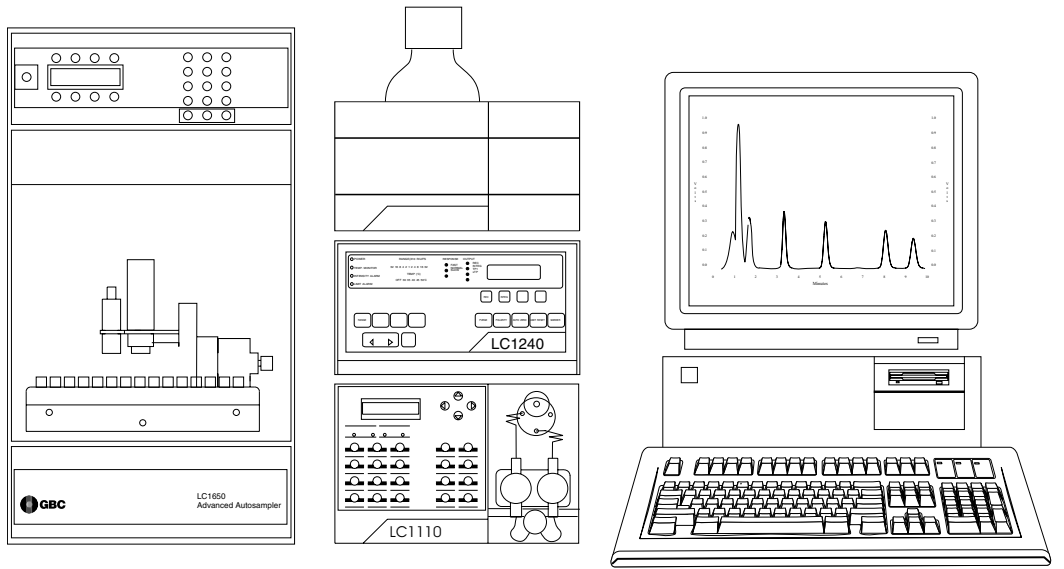
LC1110 Dual Piston HPLC Pump
LC1240 Refractive Index Detector
LC1650 Advanced Autosampler
Timberline Column Heater
WinChrom Chromatography Data
Management System

HPLC Conditions

Column: Interaction CHO-620
Carbohydrate Column (30 cm)
Mobile Phase: Water
Flow Rate: 0.5 ml/min
Injection Vol: 20 µl
Column Temp: 90°C
RI Temp: 50°C



F1
01-0358-00



F1
01-0358-00

GBC Scientific Equipment Pty Ltd
A.C.N. 005 472 686
12 Monterey Road, Dandenong, Victoria, 3175, Australia
Phone: (03) 9213 3666 Fax: (03) 9213 3677

All rights reserved
GBC publication number 01-0358-00
September, 1995